





CHAMELEON TIMELAPSE PRO24 TECHNICAL SPECIFICATIONS





The indoor/outdoor camera system shall consist of a tamper and impact resistant enclosure with integrated camera, weather resistant housing to be mounted on a fixed pole or a wall.

High Definition 24 Megapixel camera for users to remotely view the projects on a secure connection via a network connection. The camera will provide a full view of the work area on the construction site.

The contents are saved on a secure, password protected cloud server with an online software interface provided by Eclick as a managed service.



CAMERA FEATURES

Dimensions: camera Enclosure: 10.4" (265 mm) W x 8.8" (225 mm) H x 23.2" (590 mm) L

Weight: camera Enclosure: 11 kg (24.25 lb)

IP-66 weatherproof – totally protected against dust and water ingress.

Powder coated stainless-steel enclosure

Abrasion-resistance hardened glasses.



DEVICE SERVER

Industrial solid state embedded with Linux platform.

Camera (DSLR)

- Imager: 24 Megapixels (6000 x 4000 pixels)
- DSLR camera with APS CMOS image sensor.
- Auto features: ISO, Shutter, JPEG, White balance and Focus.
- Lens: 18mm – 55mm (Default), interchangeable with wide lens upon requirement.
- Photo interval: Can be adjusted between 5 – 30 minutes.

On board storage: 32 GB on-board data backup to provide an on-board image retention.



COMMUNICATION

In areas with cellular coverage, operate cameras via built-in cellular modem connection, compatible with the broadband internet service.

IP address: Public IP (remote access)



CONTROL CENTRE

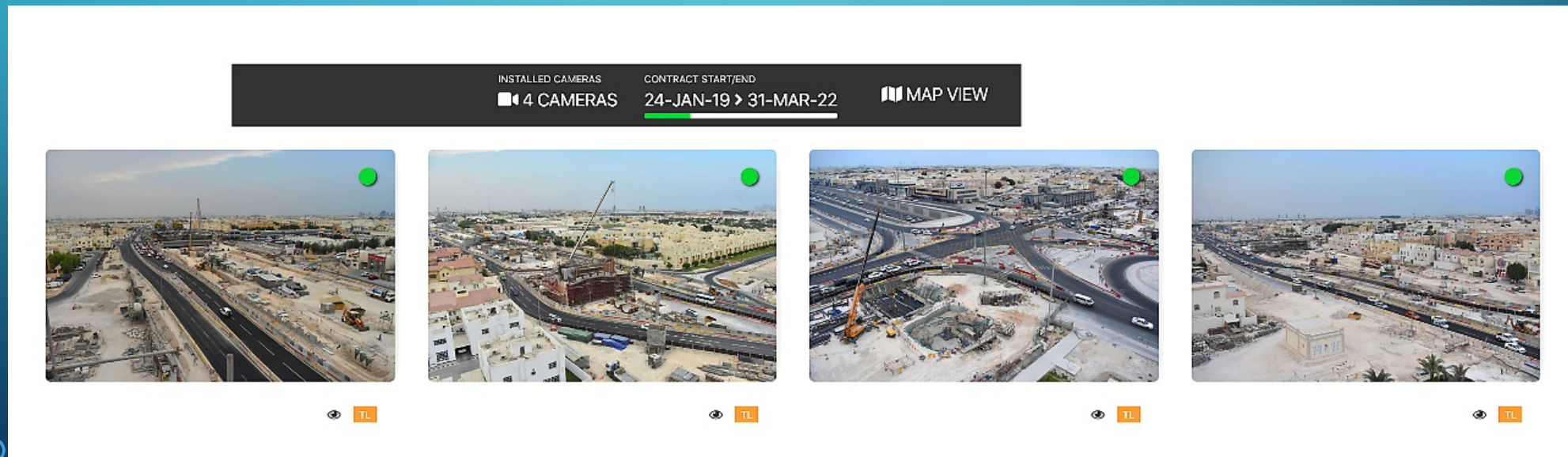
Cameleon interface provides the most robust construction photo management software available, including a secure back end to upload images as well as an easy-to-use front end solution to view and manage your visual information. Our simple library of images can be categorized by date, time and location on the jobsite.

Cameleon Control Centre can be accessed online with user name and password.




PROJECT OVERVIEW

Project overview screen to view the installed cameras on project dash board at the same time. The thumbnail of each camera shows the most recently taken image and camera online status.



PROJECT OVERVIEW



20.8° Mostly Cloudy
Wind Speed: 14.29km/h
Humidity: 69.00%
06 January 19, 17:10

Archived digital images can be converted to High Definition images.(H.D) ←

Download tool allows the user to save and share the archived images ←

Quick comparison tool helps to identify the changes of the construction progress ←

Camera Archive (calendar that allows you to locate archived images year, month, date and time) ←

Auto generated timelapse video (View and Download) ←

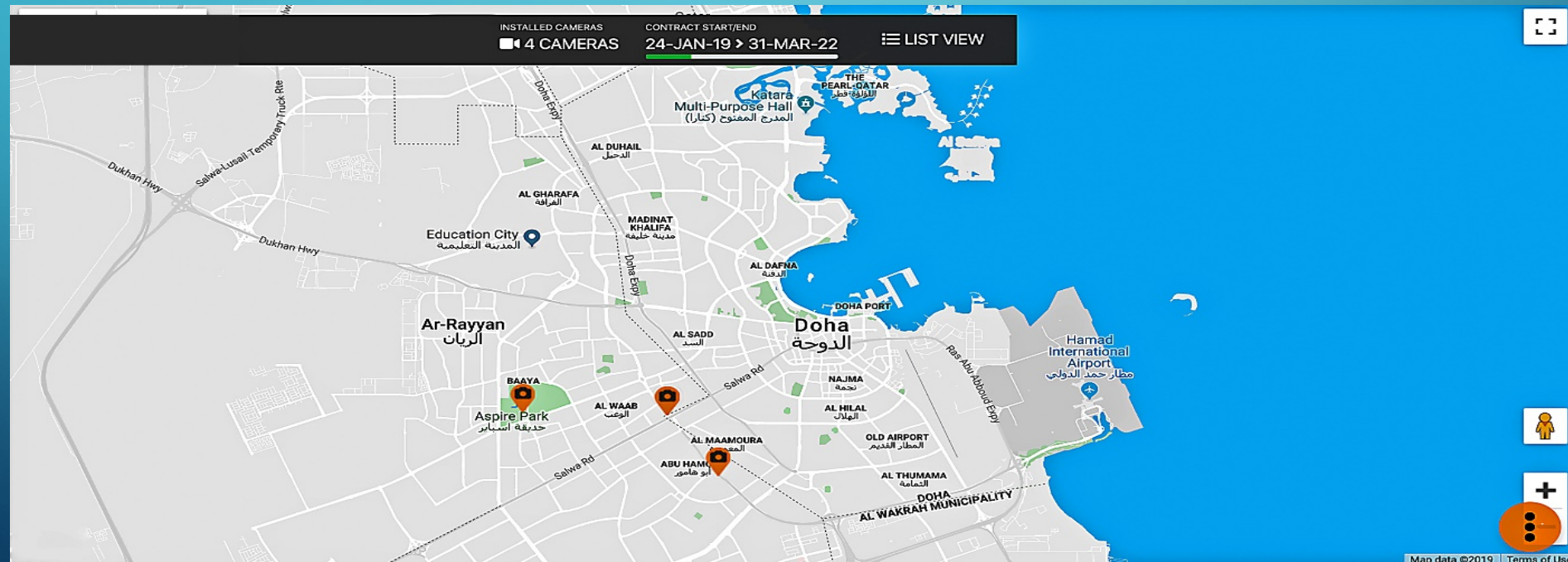
Camera Information and Location map ←

Time of the image ←

Weather Information of the day and time of the image ←

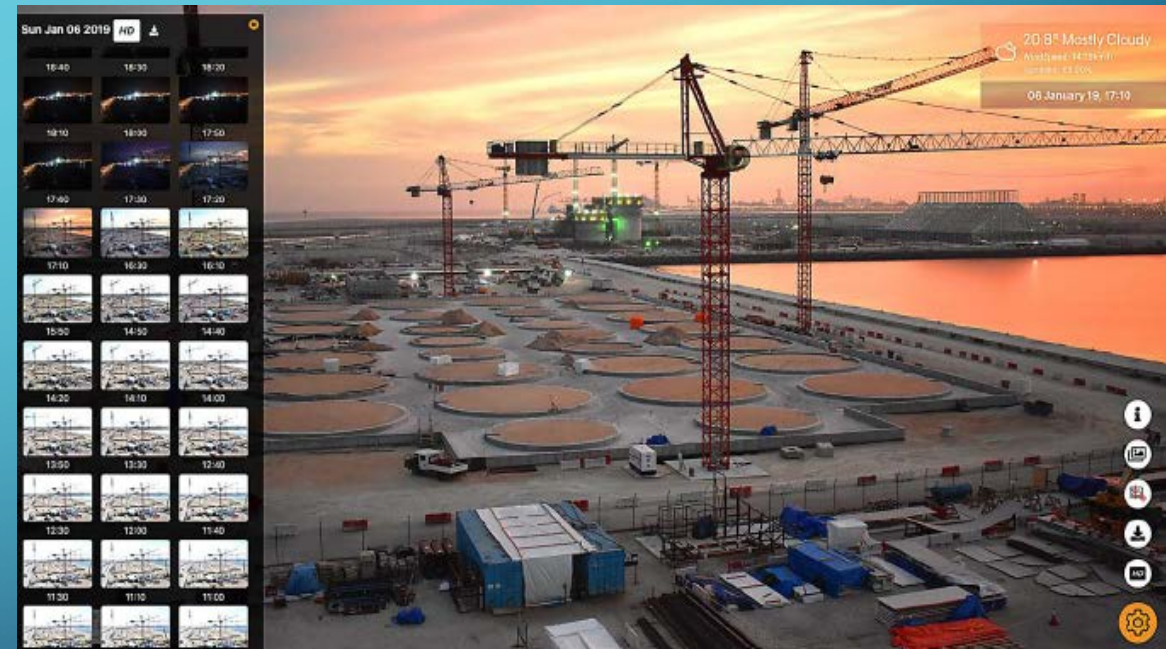
CAMERA LOCATIONS

- The system has been integrated with embedded google satellite map, which will assist the users to identify the camera locations.



CAMERA ARCHIVE

- Cameleon's professional level archiving services protect your valuable visual information long after your project is complete. Archives are easy to access with our exclusive calendar feature.
- A simple click allows team members to locate any jobsite image. Around the clock coverage provides you with a complete online database of recorded images from your camera system. Archived images are available to download and save on local storage to use.



TIMELAPSE VIDEO

- Auto generated time-lapse videos are created monthly. View date-specific segments on your time-lapse movies, ideal for quick progress reports and team updates. Perfect to share on social media by instantly uploading your time-lapse clip.



COMPARE TOOL

- The compare tool is a useful feature for fast switching between two pictures to check for small differences.
- Hovering over a picture in the Compare window will change the picture being shown full-screen. Moving your cursor between the thumbnail images allows fast flipping between two or more shots, to see small differences and changes.



INTERFACE AND ONLINE SOFTWARE MAIN FEATURES

- Software delivered by Eclick as a managed service.
- Displays company logo and project name.
- Calendar based navigation system for selecting specific images.
- Pan, Tilt and Zoom capability within a High definition images.
- A Multiview screen to view all cameras on project dash board at the Same Time. Graphical weather applet displaying of local weather.
- Embedded google map for aerial and satellite view. Save, download and print the images.
- Split windows option for comparing two different images.
- Auto generated monthly timelapse videos – view and download.

POWER

System operational voltage: either 240 VAC or 24 VDC

Solar panel

Type	Mono
Voltage	24 VDC
Wattage	250 W

Battery

Type	Gel
Voltage	24 VDC
Amperage	100 Ah
Weight	20 KG

Recharge time to 90 % of full capacity

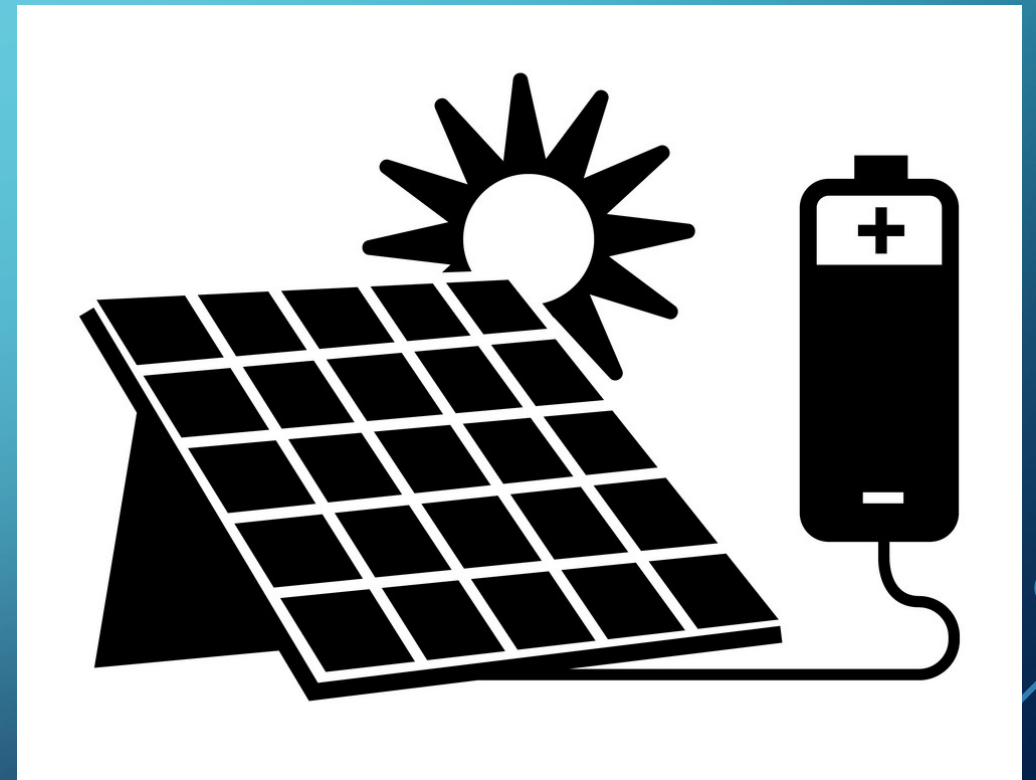
7 hours

Solar Enclosure

Water and dust proof aluminum case

Backup time providing one camera

80 hours



PRODUCT AND MANUFACTURING INFORMATION

- The products have been manufactured in Japan. **Product development, engineering design** (system design, product specs, software and interface) and **Assembly** (Quality control, electronic assembly and testing) in Qatar by Eclick multimedia solutions under brand name **Cameleon**.