



Non-Contact  
Temperature  
Screening Imager

## DUO32 Smart Non-contact Human Temperature Screening Technology



Powered by:



BeMotion<sub>INC</sub>

# DUO32 Scanner Features



## PROTECT YOUR EMPLOYEES AND COMPANY:

Ensure the safety of your people. Avoid lawsuits from exposed employees caused by manual temperature checks!



## PLUG-AND-PLAY SYSTEM:

Maximize manpower utilization. Run your business and let the DUO scanner do the work.



## SMART AI TECHNOLOGY:

This allows scanning five points of the face for human recognition system.



## AUTO ALARM SYSTEM:

Alarm system is activated in 0.5 seconds upon detection of temperature targets.



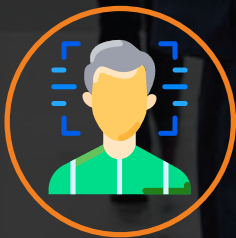
## DUAL VISION:

Allows the view of thermal and high resolution LCD display of human face.



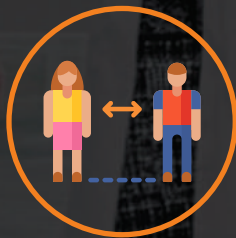
## ±0.3°C ACCURACY:

Ensures accurate recording of temperature measurement.



## 99.7% RECOGNITION RATE:

High success rate of facial recognition for more accurate contact tracing.



## 1 FT. MEASURING DISTANCE:

Complies with physical distancing regulations.



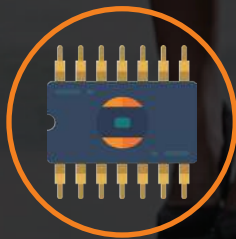
## NO DATA BREACH ISSUE:

NO data breach! Your data is absolutely SAFE in the servers located in Silicon Valley, California, USA.



## LIFETIME QUALITY:

2 years warranty.



## OUR COMPONENTS:

Are primarily sourced from the United States.



## SHIPPING AND INSTALLATION INCLUDED

- Free Trial Program
- No Obligation to Purchase
- Financing Available

For more information please contact: [info@bemotioninc.com](mailto:info@bemotioninc.com)