

Non-Contact
Temperature
Screening Imager

The Next Level Of Protection Against COVID-19



Powered by:

BeMotion.INC

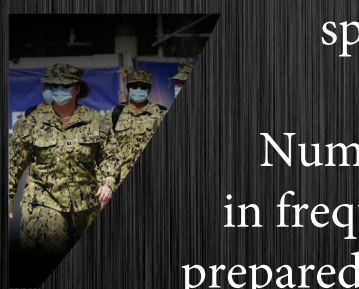


The Problem

After September 11th 2001, security protocols forever changed and the security industry adapted new standards for protecting public spaces and transportation.

The **Coronavirus** is having a similar impact on Health Monitoring as non-contact temperature screening becomes critical in mitigating the potential spread of the virus.

Numerous global epidemiologists predict an increase in frequency of future global pandemics. We need to be prepared to avoid economic shutdowns in the future.





The Solution

BeMotion Inc. – The new standard in Non-Contact Human Temperature Screening Technology:

- State of the art Intelligent Thermal Imaging Technology.
- Instant automatic detection of elevated body temperature.
- Auto-alarm feature for over-threshold subjects.
- The (AI) Screening Technology can measure temperature even if subject is wearing sunglasses, hat & mask.



DUO32

Individual Smart Non-Contact Temperature Screening:

- **20cm Hi-Resolution display**
- **Full view LCD of Human Face**
- **Auto-alarm within 0.5 seconds**
- **$\pm 0.3^{\circ}$ C Accuracy**
- **99% Accurate**
- **30,000 Face Library**



Duo Video Series Dual Vision Non-Contact Temperature Screening Technology:

Max screening of People per Minute (PPM)

- DUO 400: Up to 400+ (PPM)
- DUO 650: Up to 500+ (PPM)

Measuring distance:

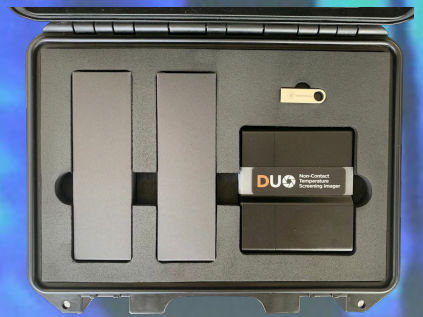
- DUO 400: 2m to 6m
- DUO 650: 2m to 7m

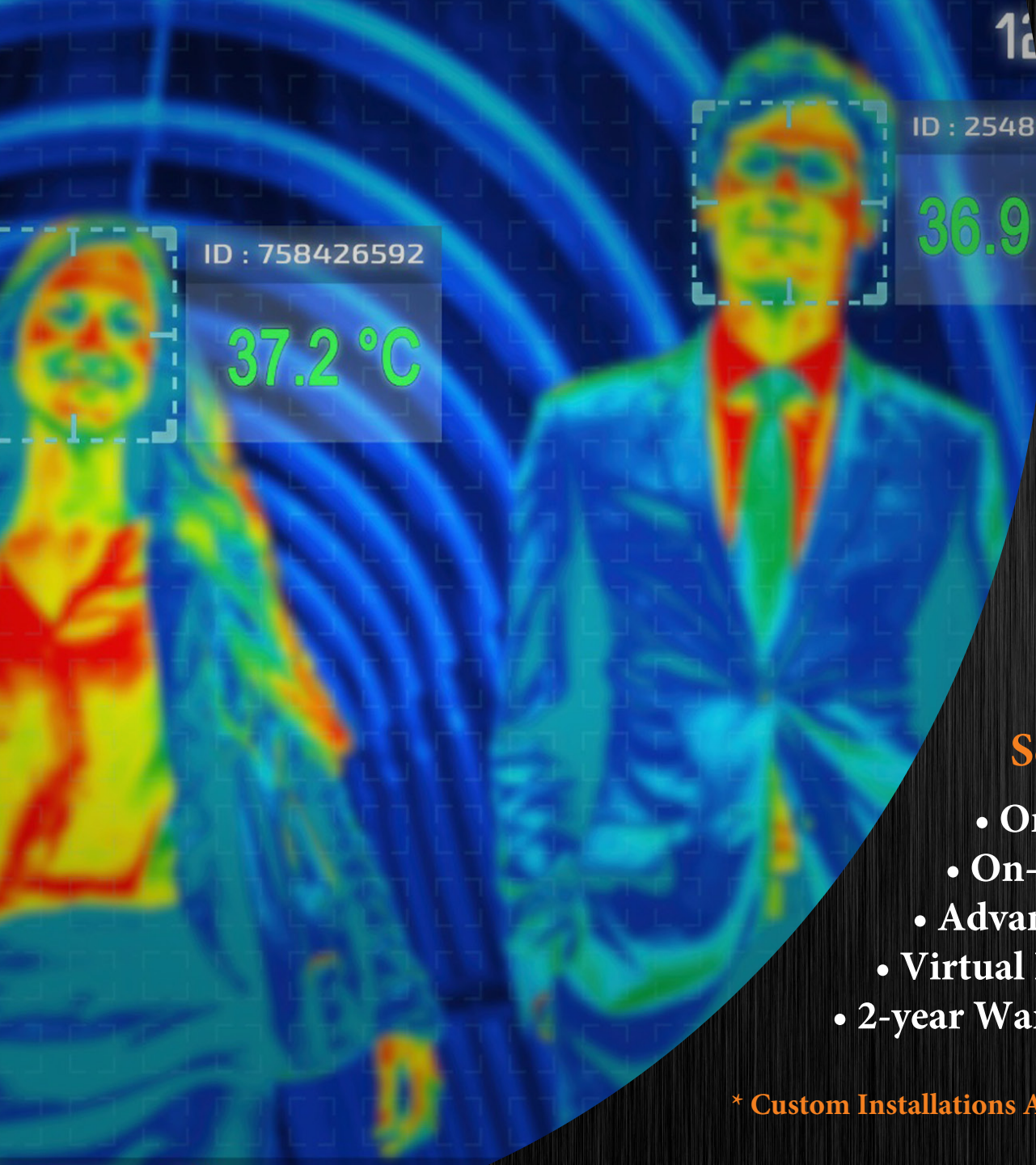
- Auto-alarm within 0.5 seconds

- No Blackbody required

- The (AI) Face Detection scans five different points of the face

- The system is 99% Accurate.





BeMotion Inc. Solution Includes:

Hardware:

- Thermal Imaging Scanner
- Laptop (**Optional**)
- Free Standing Tripod or Kiosk Stand
- Technical manual
- USB Drive (Software)
- Portable Protective Case

Service Contract and Warranty:

- On-Site Set up
- On-Site Training
- Advanced Hardware Exchange Services
- Virtual IT Support
- 2-year Warranty

* Custom Installations Available Upon Request





DUO32 Technical Parameters:

THERMAL DETECTOR

Detector:	Uncooled
Resolution:	160*260
NETD:	<40mk
Spectrum Range:	8-14um
Pixel Size:	30um
Frequency:	30Hz

LENS

Focal Length:	5mm
FOV:	37.1° x 28.1°

VISIBLE LIGHT

Resolution:	1920*1080
Min. Lux:	Color 0.001 Lux
F Value:	F 2.0

PERFORMNCE

Measurement Range:	0°C to 60°C
Measurement Accuracy:	±0.3°C
Measurement Distance:	1 meter
High Temperature Alarm:	Pop-up alarm, audio alarm
Preview Mode:	RGB/Thermal
Historical Data:	Yes
Facial Recognition:	Included
Capacity:	One person per scan
Power Supply:	USB x 2 (5V DC)
Face Detection Library:	30,000 People
Recognition efficiency:	> 0.03 sec

ENVIRONMENTAL

Working Temp:	-10°C to 50°C
Storage Temp:	-20°C to 65°C



DUO400 Technical Components

THERMAL DETECTOR

Detector:	Uncooled
Resolution:	400*300
NETD:	<40mk
Spectrum Range:	8-14um
Pixel Size:	17um
Frequency:	50Hz

LENS

Focal Length:	9.8mm
FOV:	37.1° x 28.1°

VISIBLE LIGHT

Resolution:	1920*1080
Lens:	4.6mm
FOV:	90°

PERFORMNCE

Measurement Range:	0°C to 60°C
Measurement Accuracy:	±0.3C
Measurement Distance:	2m to 6m
High Temperature Alarm:	Pop-up alarm, audio alarm
Preview Mode:	RGB/Thermal
Historical Data:	Yes
Facial Recognition:	(AI) Smart human face recognition & tracking system
Capacity:	> up to 400 people/minute
Power Supply:	USB x 2 (5V DC)
Date Output:	UVC (USB Video Class)
Control Connector:	USB

ENVIRONMENTAL

Working Temp:	-10°C to 50°C
Storage Temp:	-20°C to 65°C



DUO650 Technical Parameters

THERMAL DETECTOR

Detector	Uncooled
Resolution	640*512
NETD	<40mk
Spectrum Range	8-14um
Pixel Size	12um
Frequency	50Hz

LENS

Focal Length	13mm
FOV	48° x 38°

VISIBLE LIGHT

Resolution	1920*1080
Lens	6mm
FOV	48° x 38°

PERFORMNCE

Measurement Range	0°C to 60°C
Measurement Accuracy	±0.3°C (Without Blackbody)
Measurement Distance	2m to 7m
High Temperature Alarm	Pop-up alarm, audio alarm
Preview Mode	RGB/ Thermal
Historical Data	Yes
Facial Recognition	(AI) Smart human face recognition & tracking technology.
Capacity	>Up to 500+ people/minute
Power Supply	USB x 2 (5V DC)
Date Output	UVC (USB Video Class)
Control Connector	USB

ENVIRONMENTAL

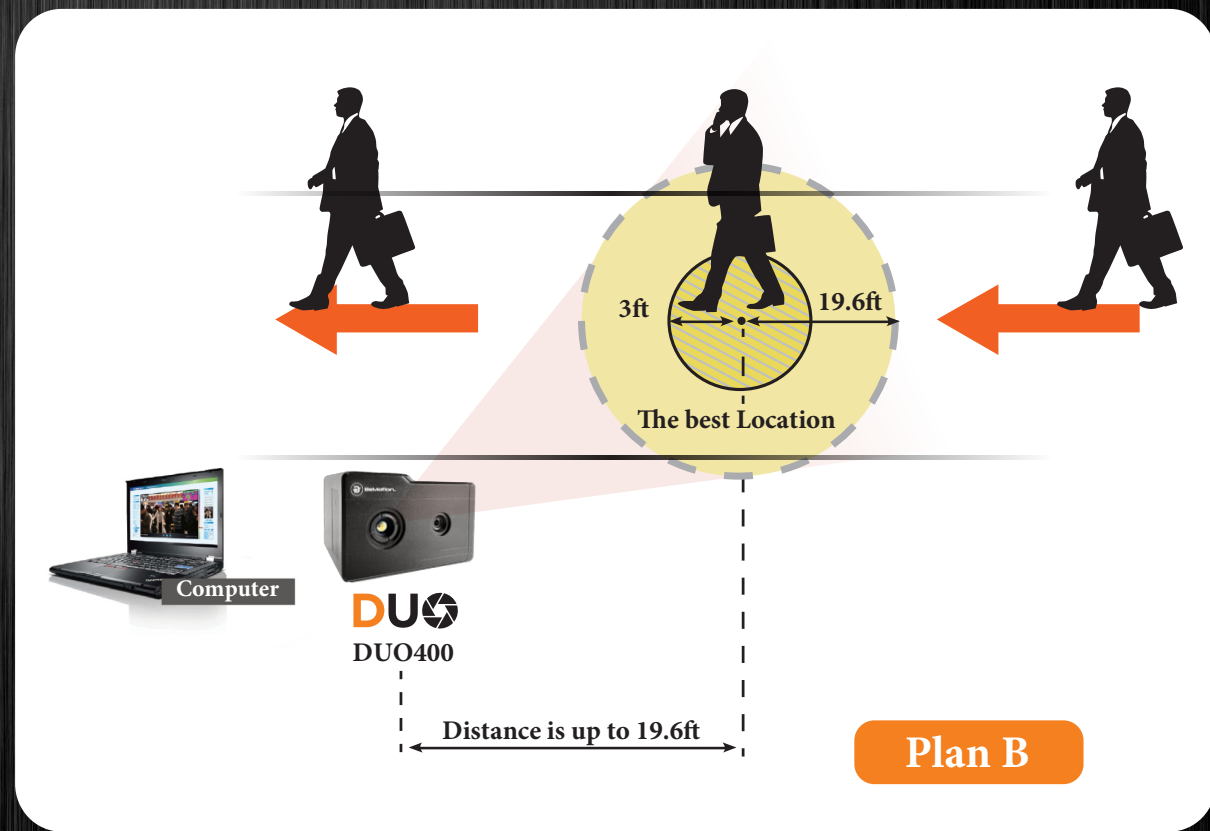
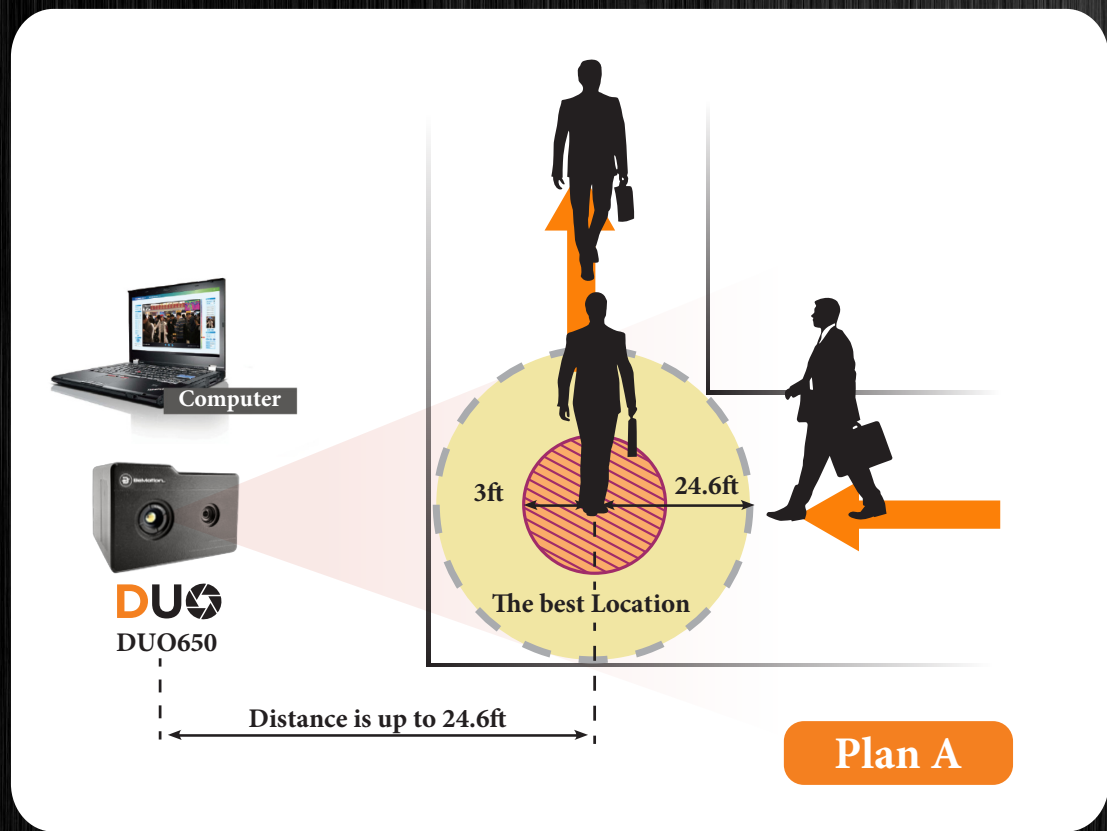
Working Temp	-10°C to 50°C
Storage Temp	-20°C to 65°C

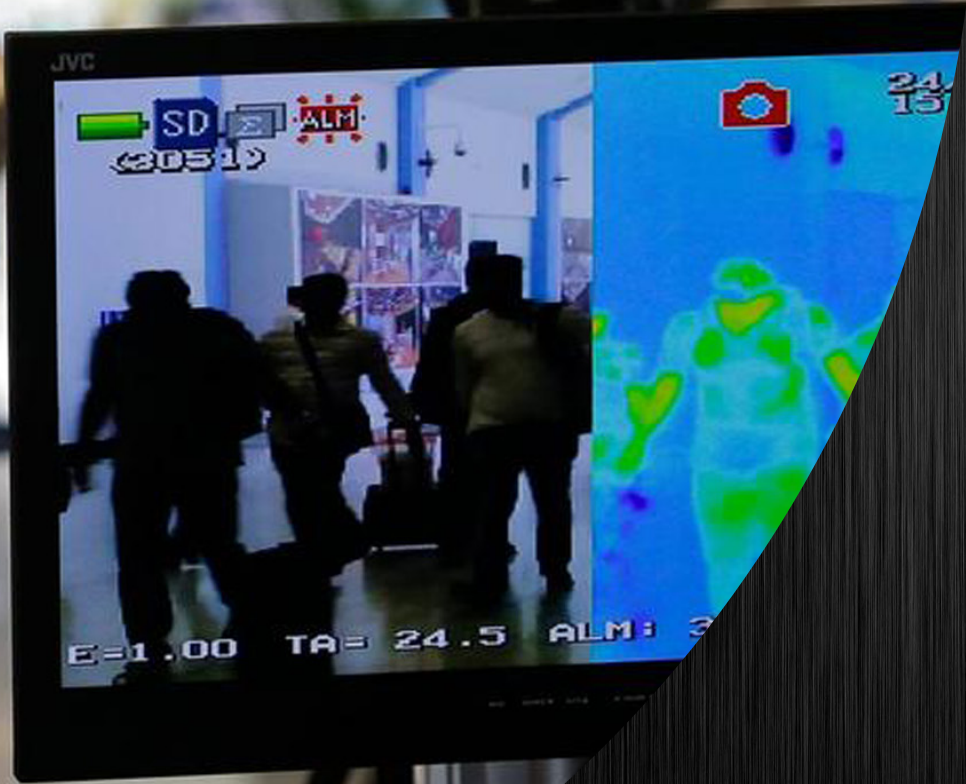


DUO Technical Components:

COMPANY	COUNTRY	FUNCTIONS
Cypress Semiconductor:	US	Interface
Corporation Intel:	US	FPGA
Corporation Micron:	US	DDR
Technology,Inc. Winbond:	US	IC
Electronics Corp. Dialog:	Taiwan	IC
Semiconductor PLC Artosyn:	UK	ARM
Ray Technology Co:	China (Option A)	Detector
Ulis:	France (Option B)	Detector
BeMotion Inc.	Canada	Software

DUO400 - DUO650 Recommended Position:





BeMotion.INC

For additional information please contact:
info@bemotioninc.com, www.bemotioninc.com